

Barrier Management Symposium ASHE, The Joint Commission

ASHE Region 6

Kahler Hotel

2015 April 14 & 15



Details

- Emergency Exits
- Restrooms
- Mobile Phones...

Barrier Management Symposium

- **Speakers – Tuesday & Wednesday**

- Jonathan Flannery, ASHE Advocacy
- Anne Guglielmo, The Joint Commission
- Rich Walke, UL
- Bill Koffel, Koffel Associates
- Nestor Sanchez, USG Corp.
- Rich Walke, UL - Concrete Industry
- **Bill McHugh, FCIA – Firestopping**
- **Paul Baillargeon, DHI – Fire Doors**
- **Marc Sorge, Greenheck – Fire&Smoke Dampers**
- **Tim Warren, TGP – Fire Rated Glazing**

Details

- Objective – YOU
- Thanks for Attending...
- Speakers Volunteer...
- Jonathan Flannery, Anne Guglielmo



Barrier Management Symposium ASHE, The Joint Commission

ASHE Region 6

Kahler Hotel

2015 April 15

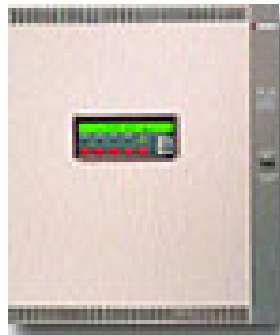
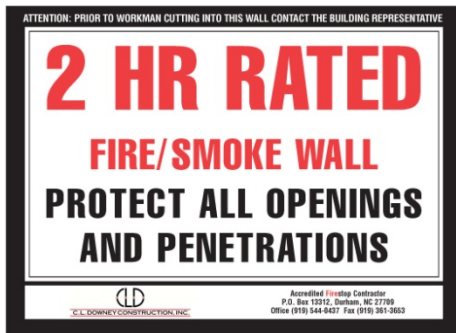


Details

- Emergency Exits
- Restrooms
- Mobile Phones...

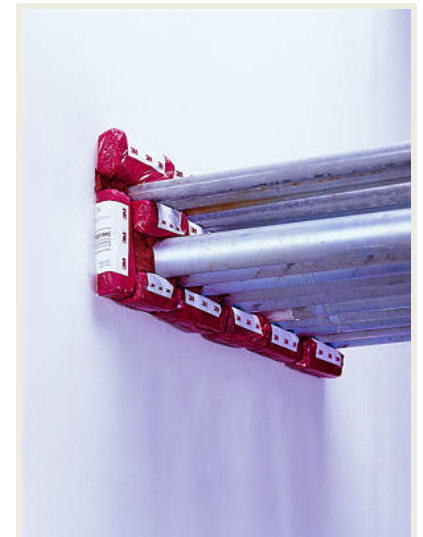
“TOTAL FIRE PROTECTION”

- Effective Compartmentation
 - Fire Barriers, Fire Walls/Floors, Smoke Barriers
 - Firestopping, Fire Dampers, Swinging and Rolling Fire Doors, Fire Rated Glazing
- Detection & Alarm Systems
- Sprinkler Suppression Systems
- Education & Egress—
 - Building Owners & Managers, Building Occupants and Firefighters



Continuity

Effective Compartmentation & Features



Barrier Management Symposium

- **Speakers – Tuesday**

- Jonathan Flannery, ASHE Advocacy
- Anne Guglielmo, The Joint Commission
- Rich Walke, UL
- Bill Koffel, Koffel Associates
- Nestor Sanchez, USG Corp.
- Rich Walke, UL, Concrete Industry

Barrier Management Symposium

- Wednesday- Features in 'Barriers'
 - Bill McHugh, FCIA - Penetrations
 - Paul Baillargeon, DHI – Fire Doors
 - Marc Sorge, Greenheck – Fire & Smoke Dampers
 - Tim Warren, Fire Rated Glazing
 - Bill McHugh & Anne Guglielmo- Barrier Management
 - Closing Remarks – Jonathan Flannery, Bill McHugh

Objective – Share Knowledge

- Barriers are for Safety – DIIM
 - Properly **Designed** and Specified
 - **Tested and Listed Systems** – Directories, Tables
 - *Specified*
 - Professional **Installation** Companies, Workforce
 - Properly **Inspected** – by Companies, Workforce
 - **Maintained** –
 - NFPA 101 - 2000 (TJC, CMS)
 - International Fire Code - IFC 2012 - Annually (Local)
- **Effective Compartmentation
for Fire & Life Safety**

Barrier Management Symposium ASHE, The Joint Commission

ASHE Region 6

Kahler Hotel

2015 April 14 & 15



ASHE Region 6

- Thanks.



Barrier Management Symposium ASHE, The Joint Commission

ASHE Region 6

Kahler Hotel

2015 April 14 & 15

